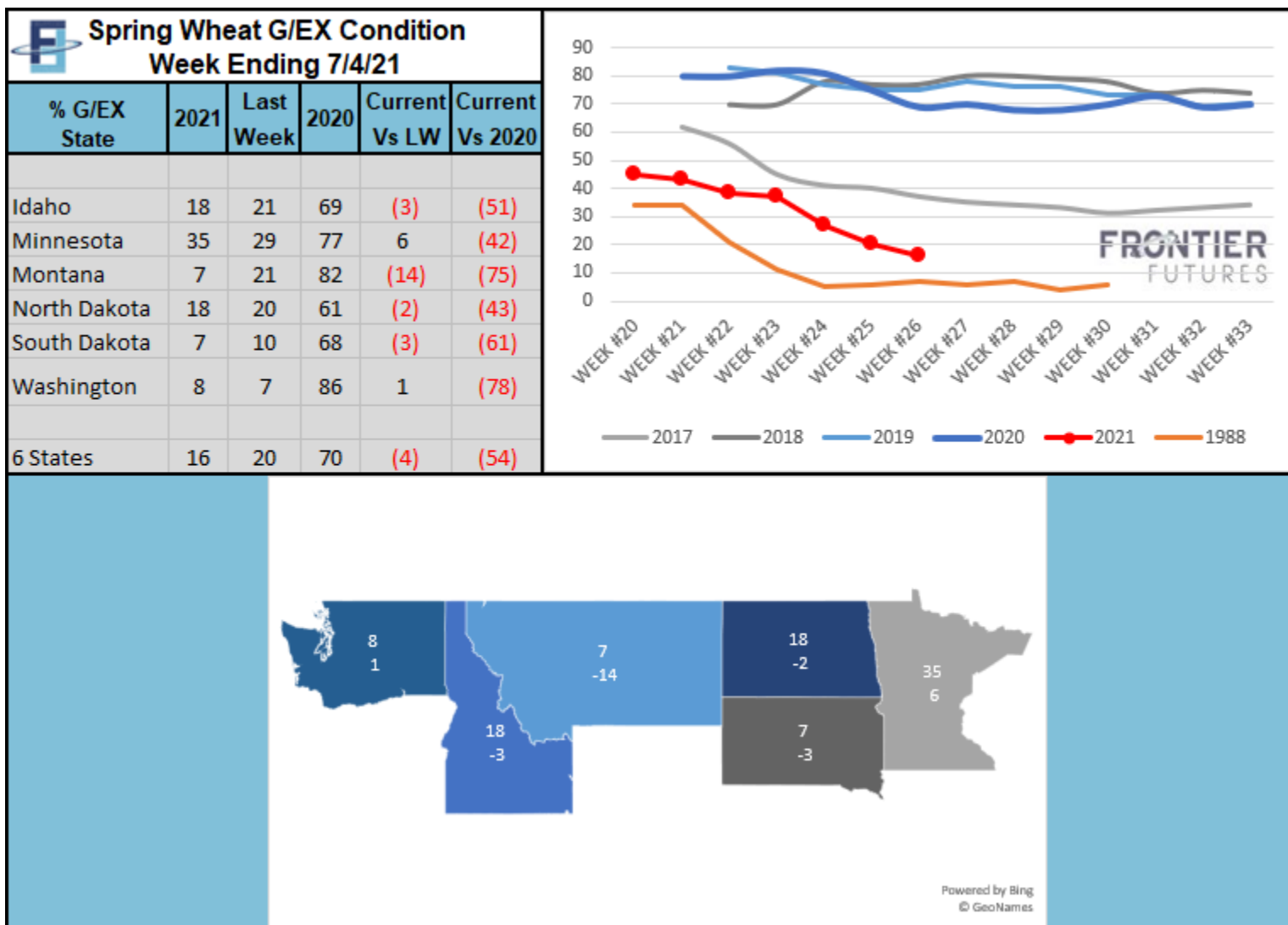
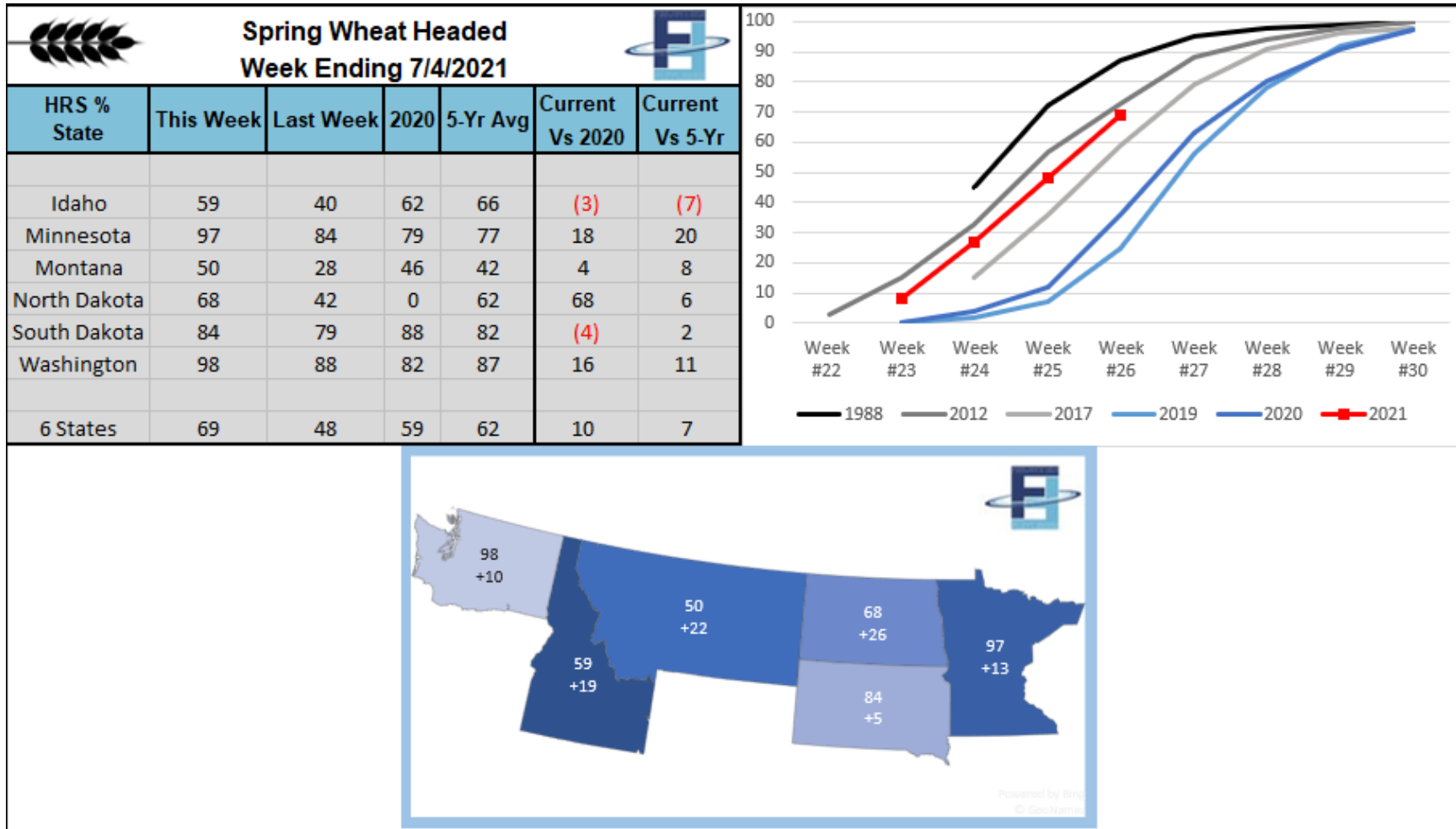


### Spring Wheat Conditions



Any statements contained herein are derived from sources believed to be reliable, but not guaranteed as to accuracy or completeness. No responsibility is assumed with respect to any such statement, nor with respect to any expression of opinion herein contained. Please note that past performance is not indicative of future results. Moreover, trading in commodity futures or options involves substantial risk of loss and is not suitable for everyone.

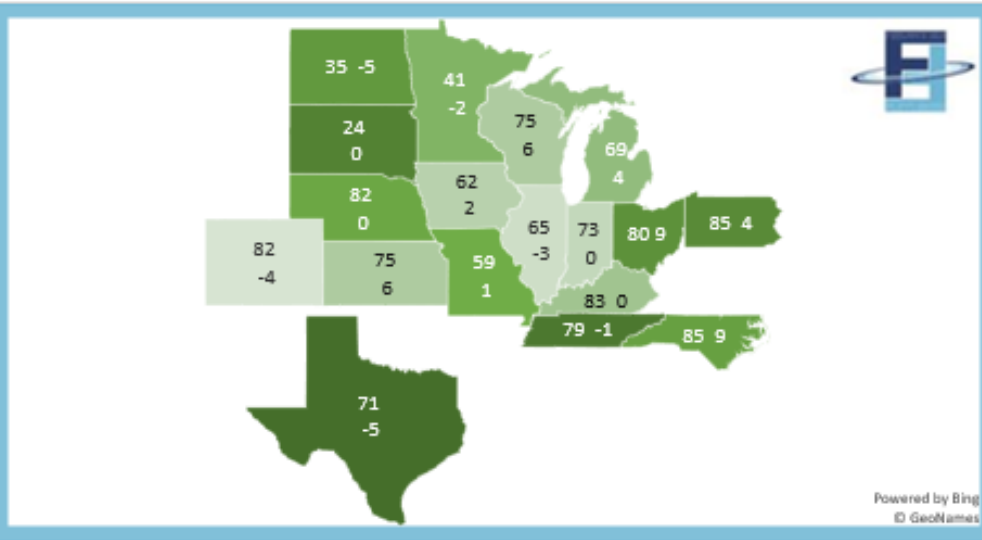
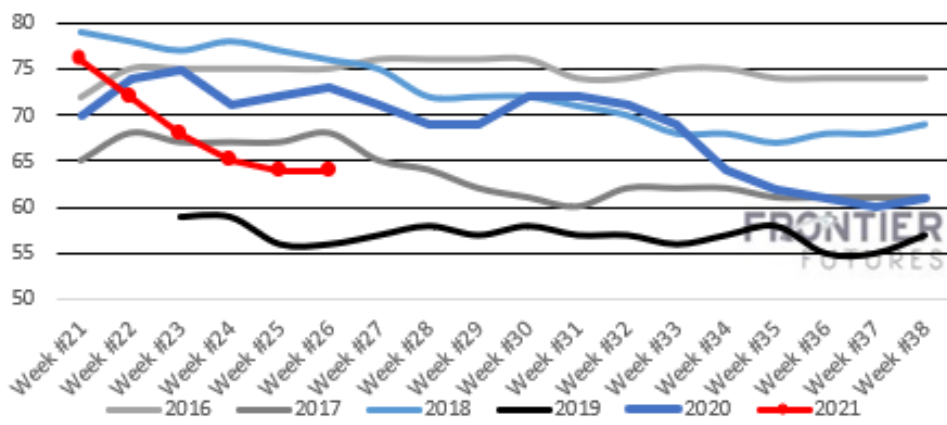
## Spring Wheat Headed



Any statements contained herein are derived from sources believed to be reliable, but not guaranteed as to accuracy or completeness. No responsibility is assumed with respect to any such statement, nor with respect to any expression of opinion herein contained. Please note that past performance is not indicative of future results. Moreover, trading in commodity futures or options involves substantial risk of loss and is not suitable for everyone.

## Corn Conditions

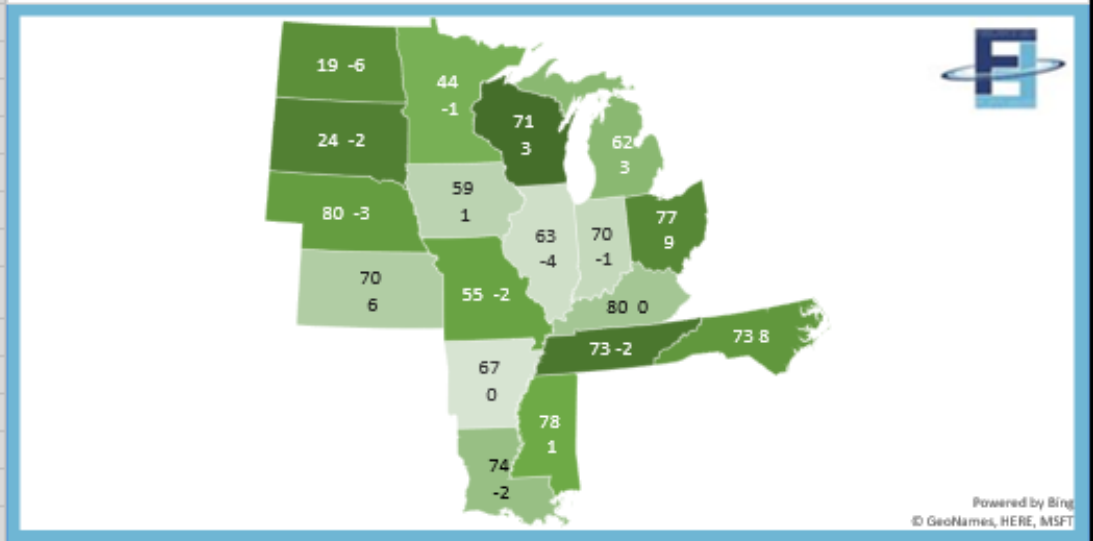
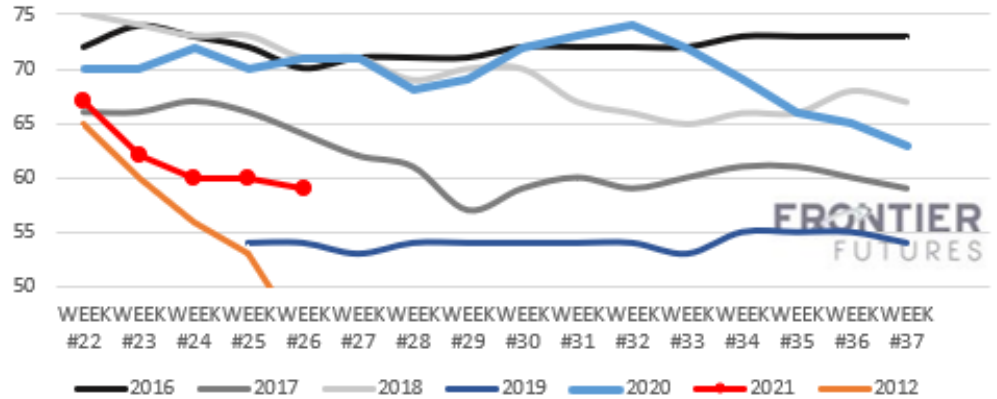
Corn G/EX Condition Week Ending 7/4/21					
% G/EX State	2021	Last Week	2020	Current Vs LW	Current Vs 2020
Colorado	82	86	55	(4)	27
Illinois	65	68	61	(3)	4
Indiana	73	73	60	0	13
Iowa	62	60	85	2	(23)
Kansas	75	69	52	6	23
Kentucky	83	83	82	0	1
Michigan	69	65	55	4	14
Minnesota	41	43	85	(2)	(44)
Missouri	59	58	69	1	(10)
Nebraska	82	82	74	0	8
North Carolina	85	76	73	9	12
North Dakota	35	40	72	(5)	(37)
Ohio	80	71	53	9	27
Pennsylvania	85	81	82	4	3
South Dakota	24	24	82	0	(58)
Tennessee	79	80	73	(1)	6
Texas	71	76	53	(5)	18
Wisconsin	75	69	79	6	(4)
18 States	64	64	71	0	(7)



Any statements contained herein are derived from sources believed to be reliable, but not guaranteed as to accuracy or completeness. No responsibility is assumed with respect to any such statement, nor with respect to any expression of opinion herein contained. Please note that past performance is not indicative of future results. Moreover, trading in commodity futures or options involves substantial risk of loss and is not suitable for everyone.

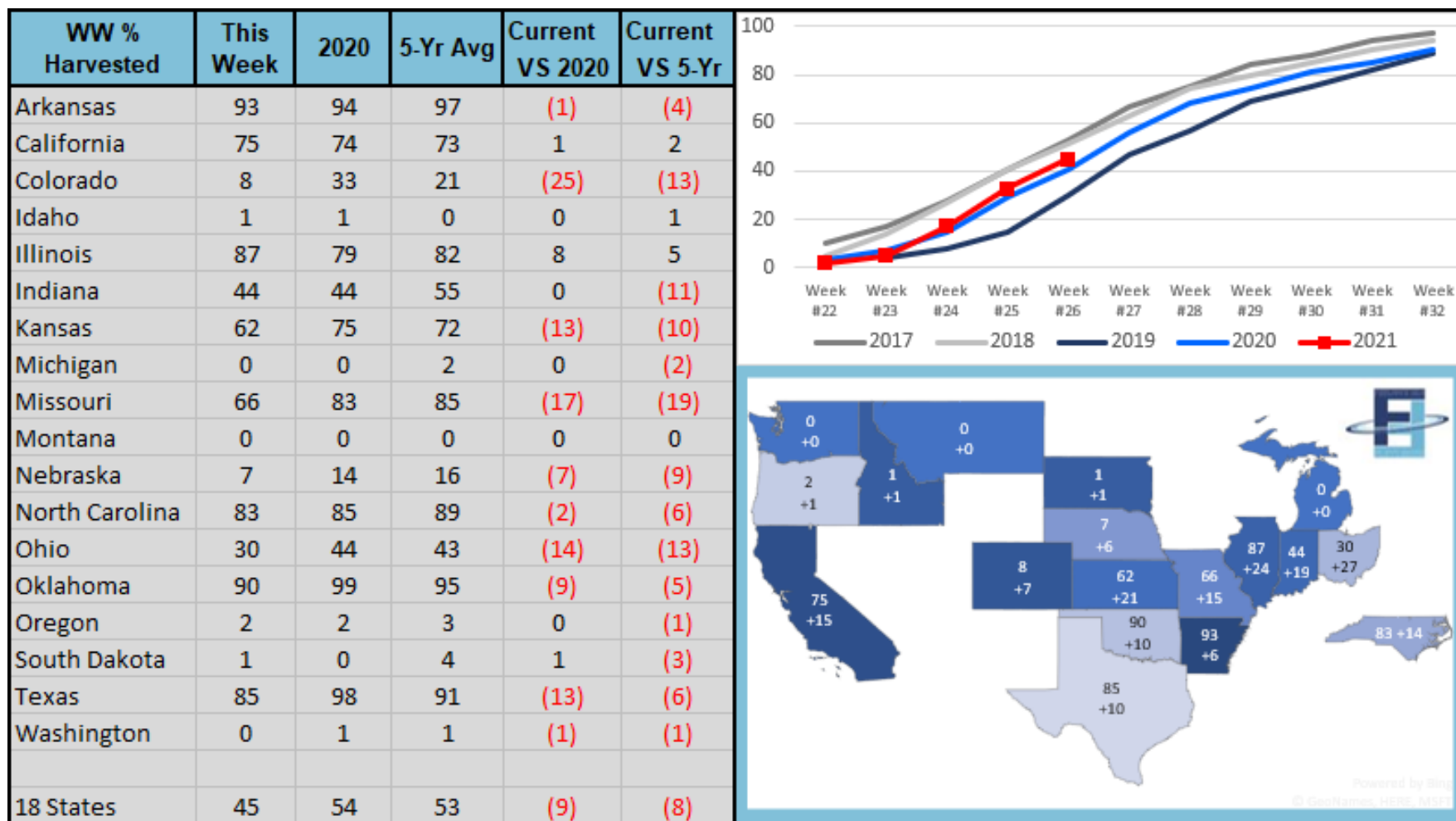
## Soybean Conditions

Soybean G/EX Condition Week Ending 7/4/21					
% G/EX State	2021	Last Week	2020	Current Vs LW	Current Vs 2020
Arkansas	67	67	68	0	(1)
Illinois	63	67	63	(4)	0
Indiana	70	71	62	(1)	8
Iowa	59	58	84	1	(25)
Kansas	70	64	57	6	13
Kentucky	80	80	78	0	2
Louisiana	74	76	87	(2)	(13)
Michigan	62	59	55	3	7
Minnesota	44	45	83	(1)	(39)
Mississippi	78	77	55	1	23
Missouri	55	57	63	(2)	(8)
Nebraska	80	83	76	(3)	4
North Carolina	73	65	69	8	4
North Dakota	19	25	69	(6)	(50)
Ohio	77	68	57	9	20
South Dakota	24	26	80	(2)	(56)
Tennessee	73	75	73	(2)	0
Wisconsin	71	68	79	3	(8)
18 States	59	60	71	(1)	(12)



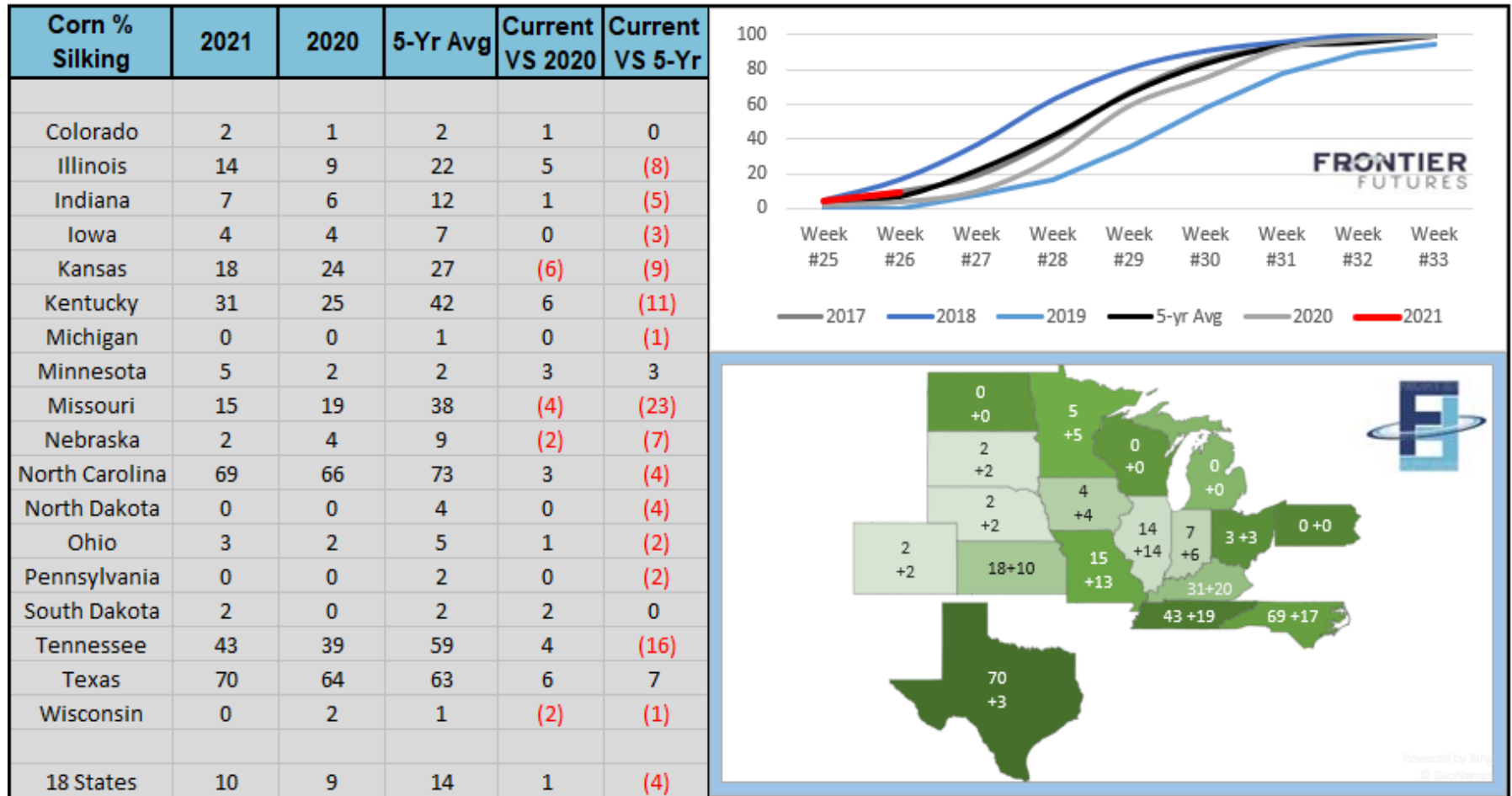
Any statements contained herein are derived from sources believed to be reliable, but not guaranteed as to accuracy or completeness. No responsibility is assumed with respect to any such statement, nor with respect to any expression of opinion herein contained. Please note that past performance is not indicative of future results. Moreover, trading in commodity futures or options involves substantial risk of loss and is not suitable for everyone.

## Winter Wheat % Harvested



Any statements contained herein are derived from sources believed to be reliable, but not guaranteed as to accuracy or completeness. No responsibility is assumed with respect to any such statement, nor with respect to any expression of opinion herein contained. Please note that past performance is not indicative of future results. Moreover, trading in commodity futures or options involves substantial risk of loss and is not suitable for everyone.

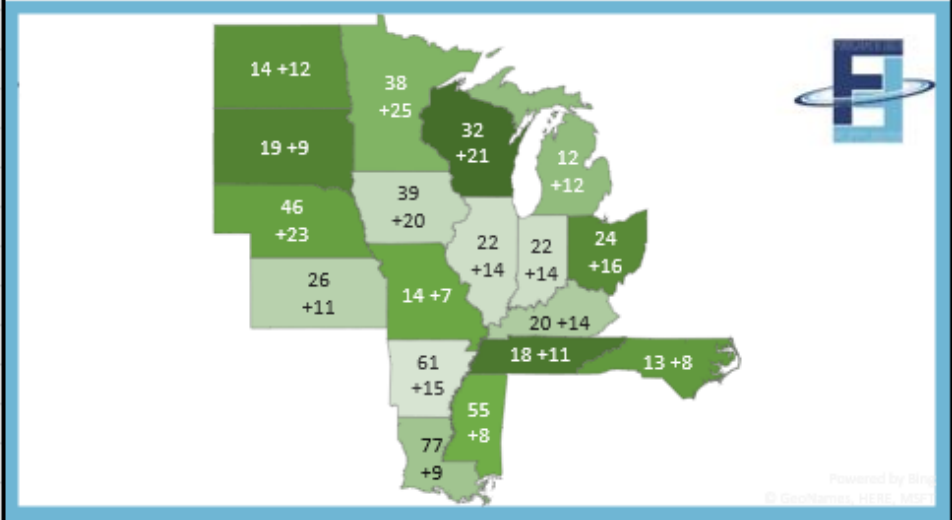
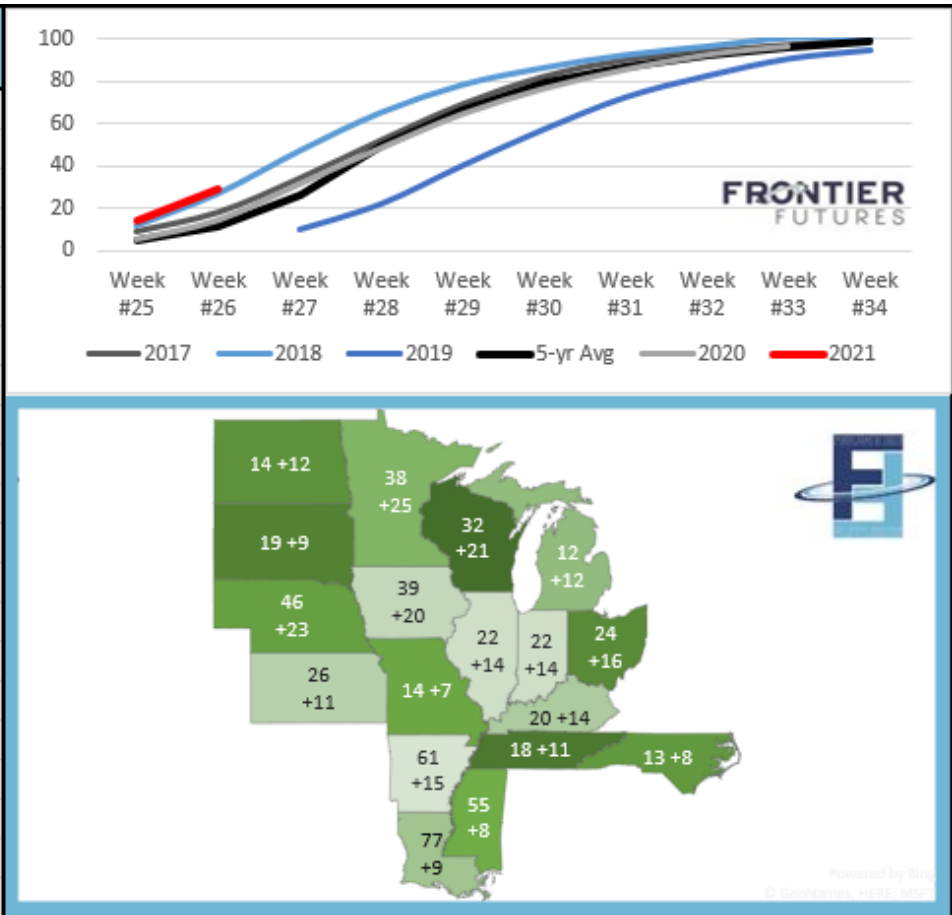
## Corn Silking



Any statements contained herein are derived from sources believed to be reliable, but not guaranteed as to accuracy or completeness. No responsibility is assumed with respect to any such statement, nor with respect to any expression of opinion herein contained. Please note that past performance is not indicative of future results. Moreover, trading in commodity futures or options involves substantial risk of loss and is not suitable for everyone.

## Soy Blooming

Soybean % Blooming	2021	2020	5-Yr Avg	Current VS 2020	Current VS 5-Yr
Arkansas	61	55	62	6	(1)
Illinois	22	20	23	2	(1)
Indiana	22	24	21	(2)	1
Iowa	39	34	22	5	17
Kansas	26	27	17	(1)	9
Kentucky	20	13	13	7	7
Louisiana	77	84	79	(7)	(2)
Michigan	12	7	10	5	2
Minnesota	38	38	19	0	19
Mississippi	55	62	65	(7)	(10)
Missouri	14	15	17	(1)	(3)
Nebraska	46	39	27	7	19
North Carolina	13	19	15	(6)	(2)
North Dakota	14	8	17	6	(3)
Ohio	24	25	18	(1)	6
South Dakota	19	35	20	(16)	(1)
Tennessee	18	17	23	1	(5)
Wisconsin	32	35	19	(3)	13
18 States	29	29	24	0	5



Any statements contained herein are derived from sources believed to be reliable, but not guaranteed as to accuracy or completeness. No responsibility is assumed with respect to any such statement, nor with respect to any expression of opinion herein contained. Please note that past performance is not indicative of future results. Moreover, trading in commodity futures or options involves substantial risk of loss and is not suitable for everyone.