

FRONTIER FUTURES, INC.

ONLINE TRADING SYSTEM USER'S GUIDE

System Requirements:

You must have Internet Explorer 5.0 or higher. If you do not have this browser, please go to www.microsoft.com/ie to download a newer version. If upgrading your browser is not practical, please call our order desk at 1-800-777-2438 and we will find an alternative for you.

Installing Frontier Online Trading System:

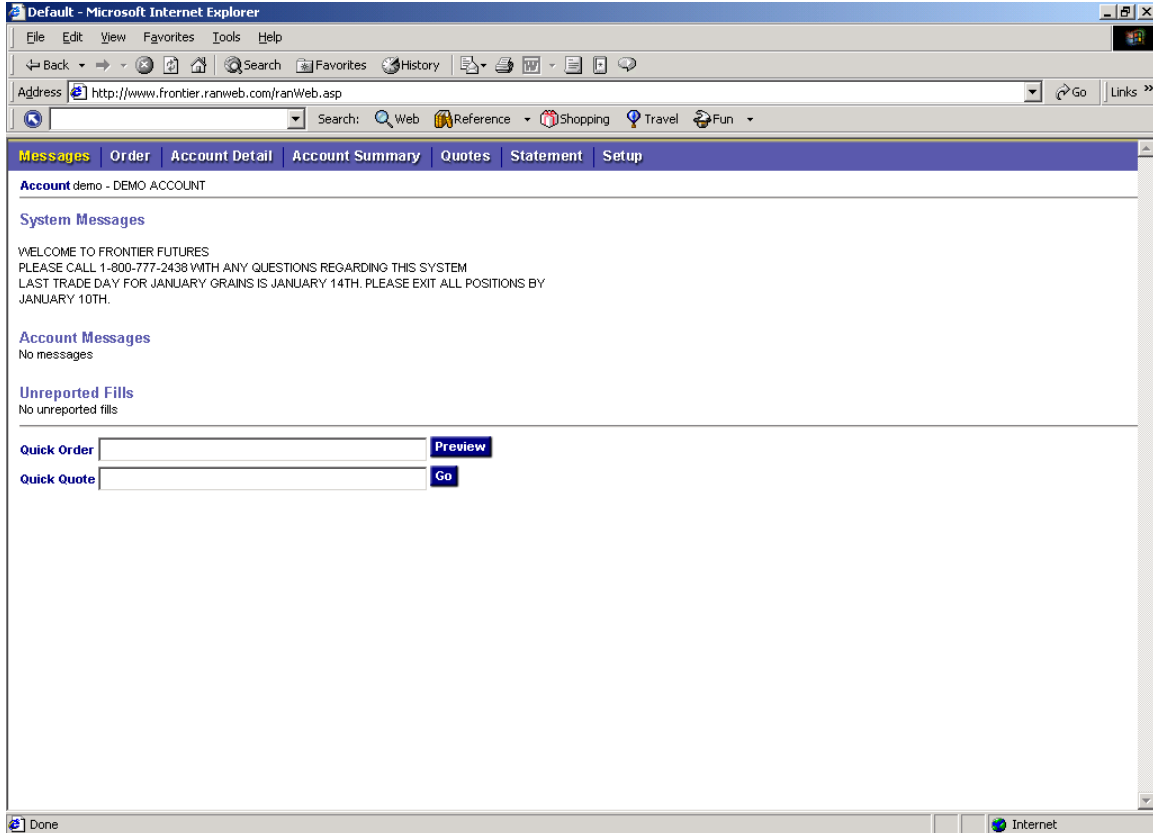
1. Go to the website <http://www.ffutures.com> , click on the Trade Now link, and then on the link to Online Trading.
2. When prompted for a username and password, enter:
 - a. Username: *ft.account number*
 - b. Password: *ft.password*
 - c. If your password was longer than 8 characters, enter only the first 8 characters of your previous password after the *ft*.
3. If you don't have the Microsoft XML Parser, your computer will prompt you to install it. Click on YES and follow the installer instructions. You will have to restart Internet Explorer (not your whole computer) when the installation finishes.
4. Log in again to the website. You should now be able to view your account information. Please call if you have any questions about installing this system.

Navigating:

The top of all pages contains the navigation bar. You may choose MESSAGES, ORDER, ACCOUNT DETAIL, ACCOUNT SUMMARY, STATEMENT, or SETUP simply by clicking on the button. The QUOTES option is inactive at this time.

The bottom of all pages has a Quick Order and Quick Quote line. An order may be placed from any screen using the Quick Order line. The Quick Quote will take you to the Quote page and display the contract (or series of contracts separated by commas) you entered into the line. All quotes on this page are delayed.

Messages:



The Messages page is automatically opened when you log in. There are three sections to the Messages Page:

1. System Messages. These messages are for all Frontier Customers. They will include such things as first notice days, option expirations, and last trading days.
2. Account messages. These messages are account specific. They may include status messages for your orders or messages from the Frontier staff.
3. Unreported fills. Filled orders will be displayed here. Once you have acknowledged them, they will no longer show up on this page.

Order:

Default - Microsoft Internet Explorer

File Edit View Favorites Tools Help

Address http://www.frontier.ranweb.com/ranWeb.asp

Messages **Order** Account Detail Account Summary Quotes Statement Setup

Account demo - DEMO ACCOUNT

Order Entry

Number of Legs Straight Order

Contract Future

Side	Qty	Mth/Yr	Commodity	Price	Order Type
Buy					

Good Till Today Trading Session Day

Instructions

Preview Park Clear

Quick Order Preview

Quick Quote Go

This page allows you to enter orders. You may fill in the fields or use the Quick Order line. The fields are:

1. Number of Legs. Choose from a Straight Order, Spread Order, or 3-Leg Spread.
2. Contract. Choose Future, Call or Put. When you choose Call or Put, a field for Strike Price and Open/Close will appear.

Default - Microsoft Internet Explorer

File Edit View Favorites Tools Help

Address http://www.frontier.ranweb.com/ranWeb.asp

Messages **Order** Account Detail Account Summary Quotes Statement Setup

Account demo - DEMO ACCOUNT

Order Entry

Number of Legs Straight Order

Contract Call

Side	Qty	Mth/Yr	Commodity	Strike Price	Open/Close Price	Order Type
Sell					Open	

Good Till Today Trading Session Day

Instructions

Preview Park Clear

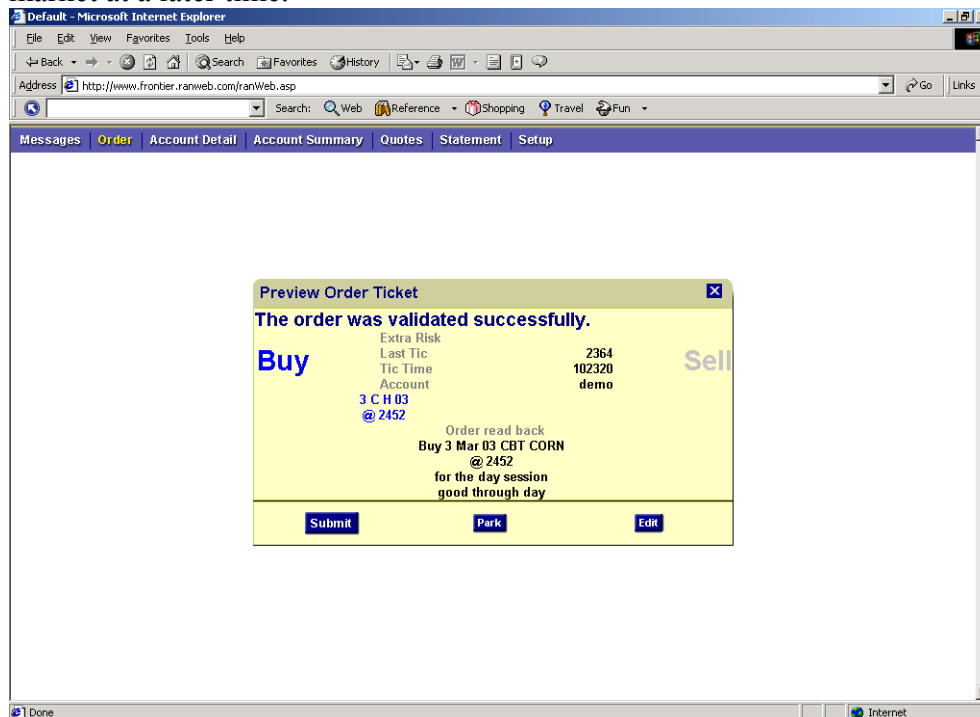
Quick Order Preview

Quick Quote Go

3. Buy/Sell. Enter b or s and the field will be filled.

4. Qty. Enter number of contracts to be traded.
5. Mth/Yr. Enter the month using the designated letter (F for Jan, G for Feb, etc.). The dropdown menu will give you all the choices. Choose a year from the next dropdown menu. Tapping the 2 key will scroll through the available years.
6. Commodity. Choose a commodity from the dropdown menu. Entering a letter in the field will advance the menu to the first commodity symbol beginning with that letter.
7. Strike Price. Enter the strike price for the option. This field will not be present unless call or put is selected from the Contract menu.
8. Open/Close. Enter Open or Close. This field will also not be present unless call or put is selected from the Contract menu.
9. Price. Enter the price. Do not use a decimal point. The letter M can be entered for a market order.
10. Order Type. Enter the type of order.
11. Good Til. Enter the duration of the order. If you are using a Good Til specific date, you must make sure that the date is not a weekend or holiday, as any orders set to expire on a weekend or holiday will NOT be cancelled and will continue to work in the market.
12. Trading Session. Leave as DAY. The only use for the electronic option is when trading an electronic side by side contract. All of the other electronic contracts are specified by their commodity symbol.
13. Special Instructions. Leave this blank.

Once all of the fields are filled in, click on the Preview or Park button. The Clear button will clear all of the fields. The Preview button will preview the order prior to sending the order for execution. The Park button will save the order so that you can release it to the market at a later time.

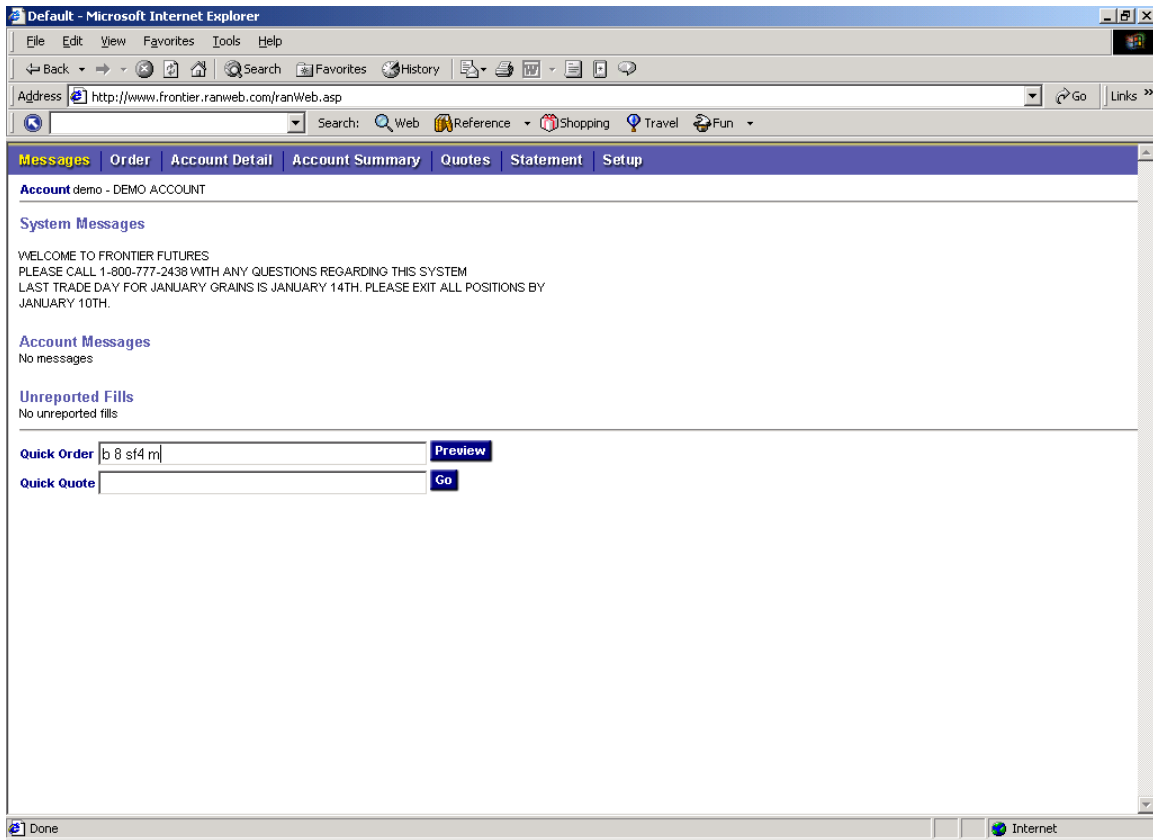


The preview screen will show the Last Tic and Time for the order to be entered. This is a real-time quote. The order read back will contain the necessary information for transmittal of the order for execution. Please carefully review this information before submitting the order. You may also park the order from this screen, or click on the Edit button to change any part of the order.

Once you have submitted an order, please click on the All Activity button to proceed to the Account Detail screen. Here you should ensure the order was accepted and is working at the exchange. Call the Frontier order desk if you have any problems. Some orders may take longer to be accepted. Orders are checked for validity and margin funds.

Quick Order:

You may enter orders from any screen using the Quick Order line. The Quick Order line fills in the fields in almost the same order as the Order screen, starting with the Buy/Sell field. The only exception is that the commodity comes before the month/year. Fields are separated by a space. There is no space between the commodity and the month/year. An order to buy 8 Jan 2004 soybeans at the market would be:



The screenshot shows a Microsoft Internet Explorer browser window displaying a trading account interface. The address bar shows the URL <http://www.frontier.ranweb.com/ranWeb.asp>. The page has a navigation menu with tabs: Messages, Order, Account Detail, Account Summary, Quotes, Statement, and Setup. The main content area is titled "Account demo - DEMO ACCOUNT" and includes sections for System Messages, Account Messages, and Unreported Fills. At the bottom, there is a "Quick Order" form with a text input field containing "b 8 sf4 m" and a "Preview" button. Below it is a "Quick Quote" form with an empty text input field and a "Go" button.

Default - Microsoft Internet Explorer

File Edit View Favorites Tools Help

Address <http://www.frontier.ranweb.com/ranWeb.asp>

Search: Web Reference Shopping Travel Fun

Messages Order Account Detail Account Summary Quotes Statement Setup

Account demo - DEMO ACCOUNT

System Messages

WELCOME TO FRONTIER FUTURES
PLEASE CALL 1-800-777-2438 WITH ANY QUESTIONS REGARDING THIS SYSTEM
LAST TRADE DAY FOR JANUARY GRAINS IS JANUARY 14TH. PLEASE EXIT ALL POSITIONS BY
JANUARY 10TH.

Account Messages
No messages

Unreported Fills
No unreported fills

Quick Order Preview

Quick Quote Go

Done Internet

Account Detail:

The screenshot shows a web browser window titled "Default - Microsoft Internet Explorer" displaying an account detail page. The address bar shows "http://www.frontier.ranweb.com/ranWeb.asp". The page has a navigation menu with tabs: Messages, Order, Account Detail (selected), Account Summary, Quotes, Statement, and Setup. Below the menu, the account name is "Account demo - DEMO ACCOUNT".

The "Account Status" section shows data refreshed as of 07 Jan 2003 at 09:35:55. It includes a "Refresh" button and a version number "v.3". A summary table displays the following values:

Total Equity	Net Option Value	Total Value	Initial Risk	Maintenance Risk	Projected Initial Risk	Projected Maintenance Risk
57,604	-10,195	47,409	9,800	9,800	9,800	0

The "Activity (Detail)" section includes a key for activity types: Filled, Split Fill, Partially Filled, Approved, Pending, Parked, Rejected, Cancelled, Replaced, and Position. It also has a page size of 15, a filter set to "All Activity", and a "Clear Sort" button.

The main activity table has the following columns: Order ID, Status, Side, Working Quantity, Mth/Yr, Commodity, Strike, Fills, Value, Last Tic, and Price. The table contains 15 rows of activity data, including positions for C - CBT CORN and KW - KBT WHEAT.

The Account Detail page has two sections. The Account Status section will show the current value of your account and your current and projected margin requirements. Clicking on the down arrow at the end of the line will show your start of day account value. The Activity Section will show all of your positions and activity. The types of positions and orders are color coded, with the key across the top. The Last Tic value displayed is real time, as is the position valuation. The Activity page may be sorted by any of the fields by clicking on the arrow next to the field header.

Each position has a Q next to the commodity and a O next to the price in the Fills field. The Q will bring up a delayed quote for that contract. The O will bring up an order in the preview screen to exit this position at the market. You can choose the edit button if you do not want to place the order at the market.

Each working order has several buttons. The X button cancels the order. C is cancel/confirm. R is used to cancel and replace the order. The down arrow will give you further details about the order, including time placed and order status.

Account Summary:

Default - Microsoft Internet Explorer

Address: http://www.frontier.ranweb.com/ranWeb.asp

Messages | Order | Account Detail | **Account Summary** | Quotes | Statement | Setup

Account demo - DEMO ACCOUNT

Account Status Data refreshed as of: 07 Jan 2003 : 11:02:11 [Refresh](#) v.3

Total Equity	Net Option Value	Total Value	Initial Risk	Maintenance Risk	Projected Initial Risk	Projected Maintenance Risk
57,891	-10,114	47,777	9,694	9,694	9,694	9,694

Activity (Summary) Key: Approved Position

< 1 2 >

Side	Quantity	Mth/Yr	Commodity	Strike	Price	Value	Order ID
Short	2	Mar 03	C - CBT CORN		2426	500.00	
Short	10	Mar 03	C - CBT CORN	300 Call	115	62.00	
Short	2	Mar 03	C - CBT CORN	320 Call	110	12.00	
Short	1	Mar 03	C - CBT CORN	250 Put	74	687.00	
Short	1	Jul 03	C - CBT CORN			-650.00	
Long	4	Mar 04	C - CBT CORN		2484	-250.00	
Short	3	Mar 03	KW - KBT WHEAT		3650	150.00	
Long	2	May 03	KW - KBT WHEAT		3480	75.00	
Short	1	Jul 03	KW - KBT WHEAT		3290	-437.00	
Long	2	Sep 03	KW - KBT WHEAT		3320	400.00	
Short	2	May 03	LH - CME LEAN HOGS	64 Call	350	2640.00	
Short	2	Jun 03	LH - CME LEAN HOGS	62 Call	450	4256.00	
Long	1	Mar 03	S - CBT SOYBEANS		5704	487.00	
Long	1	Mar 03	S - CBT SOYBEANS	580 Call	80	800.00	
Short	1	Mar 03	S - CBT SOYBEANS	600 Call	100	500.00	

Done Internet

This page is similar to the Account Detail page, but the Activity section will show net positions and working orders rather than each individual position, fill, or order.

Quotes:

This page will display delayed quotes.

Default - Microsoft Internet Explorer

File Edit View Favorites Tools Help

Address <http://www.frontier.ranweb.com/ranWeb.asp>

Messages Order Account Detail Account Summary **Quotes** Statement Setup

Account demo - DEMO ACCOUNT

Data refreshed as of: 08 Jan 2003 : 10:08:36 [Refresh](#)

Quotes

Commodity	Mth/Yr	Strike	Last Tic	Bid Price	Asking Price	Net Change	Tic Time	2 nd Last Tic	3 rd Last Tic	Open	High Price	Low Price	Close	Volume on Contract	Open Interest
R KW - KBT WHEAT	Mar 03		123456	123456	123456	0	03:27:12	123456	123456	123456	123456	123456	123456	123456	123456
R ES - GBX EMINI S&P	Mar 03		123456	123456	123456	0	03:27:12	123456	123456	123456	123456	123456	123456	123456	123456
R S - CBT SOYBEANS	Mar 03		123456	123456	123456	0	03:27:12	123456	123456	123456	123456	123456	123456	123456	123456
R US - CBT T-BONDS	Mar 03		123456	123456	123456	0	03:27:12	123456	123456	123456	123456	123456	123456	123456	123456
R ED - IMM EURODOLLAR	Jun 04		123456	123456	123456	0	03:27:12	123456	123456	123456	123456	123456	123456	123456	123456
R CL - NYM CRUDE	Dec 03		123456	123456	123456	0	03:27:12	123456	123456	123456	123456	123456	123456	123456	123456

[Remove All](#)

Favorite Quotes

[Load](#) [Save](#) [Add](#)

Quick Order [Preview](#)

Quick Quote [Go](#)

Done Internet

Enter the commodity symbol, month and year and click add to add a quote. You can also enter a series of quotes (separated by commas) and click add to view several quotes.

Statement:

Account Status Data refreshed as of: 07 Jan 2003 : 11:02:11 Refresh v.3

Total Equity	Net Option Value	Total Value	Initial Risk	Maintenance Risk	Projected Initial Risk	Projected Maintenance Risk
57,891	-10,114	47,777	9,694	9,694	9,694	9,694

Today's Statement

TRD-DATE	S-DATE	AT	LONG	SHORT	LGM	CONTRACT/PRODUCT DESCRIPTION	PRICE	PC	NET POS	OTE/UNREAL P/L	MKT VALUE	
10/13/02		F1		1		CALL JAN 03 IMM J YEN	730	.730	US		187.50-	
11/08/02-X			*	1 *		.1-DQ .114 DF AV	.730	.150	**	.00 *	187.50-*	
10/23/02		F1		1		CALL FEB 03 IMM J YEN	710	1.550	US		1,625.00-	
12/05/02-X			*	1 *		.5-DQ .480 DF AV	1.550	1.300	**	.00 *	1,625.00-*	
10/13/02		F1		1		PUT JAN 03 IMM J YEN	670	.160	US		37.50-	
11/08/02-X			*	1 *		.0 DQ .018 DF AV	.160	.030	**	.00 *	37.50-*	
10/23/02		F1		1		PUT FEB 03 IMM J YEN	680	.480	US		612.50-	
12/05/02-X			*	1 *		.2 DQ .210 DF AV	.480	.490	**	.00 *	612.50-*	
						NET FUTD			.4-			
Long	F1 REGULATED		5,663.50	FIR	10,621.82	ACB	.00	LMV	4,958.32	WF	.00	OTE
Short			4,833.50	FMR	10,621.82	PBL	.00	LOV	4,958.32	M/E	10,621.82	TE
Long			1.00000000	FCV	140.00	-COM	2,462.50	-SOV	.00	SIM	8,159.32	LV
Short			2,462.50	-NOV	.00	MPL	.00	LIM	.00	EIR	.00	NIM
Long			10,621.82	XTE	5,663.50	XIR						

Short	2	May 03	LH - CME LEAN HOGS	64 Call	350	2640.00	
Short	2	Jun 03	LH - CME LEAN HOGS	62 Call	450	4256.00	
Long	1	Mar 03	S - CBT SOYBEANS		5704	487.00	
Long	1	Mar 03	S - CBT SOYBEANS	580 Call	80	800.00	
Short	1	Mar 03	S - CBT SOYBEANS	600 Call	100	500.00	

You can view or print you previous day's statement on this page. Click on the X to return to the previous page.

Setup:

You can choose how you would like to receive your fills on this page. The choices in the dropdown box are view online, e-mail, or none.